

Polar Zonohedra Edge-Unfold to Nets

Joseph O'Rourke*

February 17, 2023

Abstract

This note proves that every polar zonohedron has an edge-unfolding to a non-overlapping net.

1 Introduction

What has become known as Dürer's Problem [O'R13] asks whether or not every convex polyhedron P has an edge-unfolding—a spanning tree of the 1-skeleton which when cut, unfolds the surface of P to a planar simple polygon known as a *net*. A key requirement is that a net does not self-overlap.¹ Despite considerable effort since Shephard first posed the question formally [She75], there are only finite classes of polyhedra (5 Platonic solids, 13 Archimedean solids, 92 Johnson solids), and a few infinite classes of polyhedra known to edge-unfold to a net: prisms, domes [DO07, p. 323], prismoids [O'R01] [DO07, p. 325], nested prisms [Rad21].

A *zonohedron* is a centrally symmetric convex polyhedron that may be defined as the Minkowski sum of a set of line segments. A *polar zonohedron* is formed when the generating segments constitute an equally spaced and equal (unit) length star (or “umbrella”) at one of its two poles. It is symmetric about the line through the two poles; we'll assume this line is vertical. It is also symmetric about a plane orthogonal to and through the midpoint of the poles line. All of its edges have the same length; all of its faces are rhombs. A polar zonohedron is determined by two parameters: n , the number of rhombs incident to each pole, and $\theta \in (0, \pi/2)$, the angle that measures the degree of closure at the poles. Thus there is a continuum of polar zonohedra. Small θ produce pancake-like polyhedra, and θ near $\pi/2$ produce thin cigar-shaped polyhedra. See Fig. 1.

The aim of this note is to prove this theorem:

Theorem 1 *Every polar zonohedron has an edge-unfolding to a (non-overlapping) net.*

*Departments of Computer Science and of Mathematics, Smith College, Northampton, MA 01063, USA. jorourke@smith.edu.

¹Even though redundant, to block misinterpretation we sometimes call it a *non-overlapping net*.

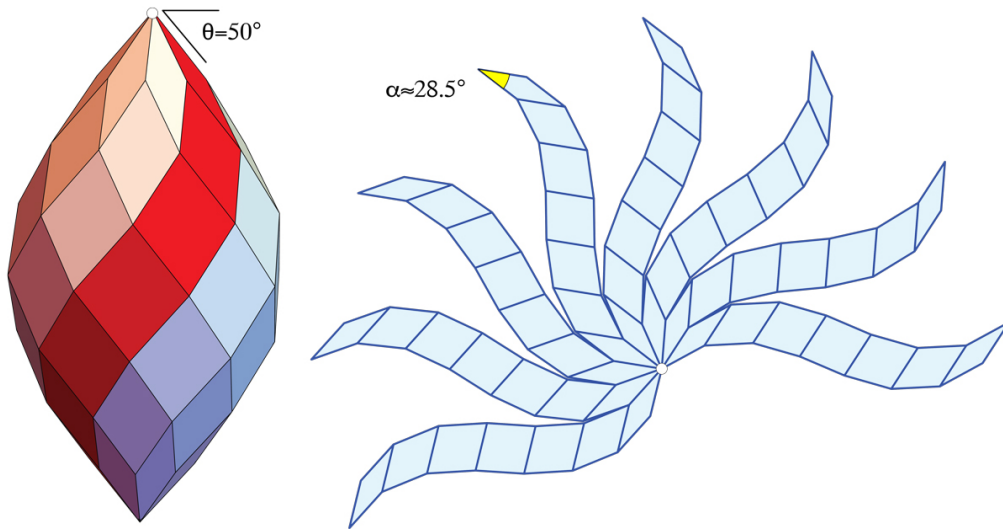


Figure 1: $n = 8, \theta = 50^\circ$. One zone Z of $(n - 1) = 7$ rhombs is marked in red.

The unfolding is illustrated in Fig. 1. It unfolds each of the n zones, each joined at the image o of the north pole. A *zone* of a polar zonohedron is a collection of rhombs all sharing a set of parallel edges. There are n such congruent zones comprising the surface, each containing $(n - 1)$ rhombs. The edges cut between each pair of adjacent zones form what George Hart calls a “surface helix.” Two further examples are shown in Figs. 2 and 3

I rely on Hart’s thorough exposition in [Har21], as well as employing his Mathematica software. See also [Tow96].

2 Notation

Distinguish between a zone Z in \mathbb{R}^3 and that zone unfolded, or developed in the plane as Z . Each Z is composed of $(n - 1)$ rhombs: R_1, R_2, \dots, R_{n-1} . Let α be the angle of R_1 at the corner that is incident to the (north) pole point.

Let o be the planar image of the north pole. We focus on two consecutive unfolded zones, because if adjacent zones do not overlap, then there is no overlap in the entire unfolding. All zones are congruent in \mathbb{R}^3 and therefore congruent in their planar unfoldings. Let Z be one zone, and Z' its counterclockwise (ccw) neighbor sharing an edge incident to the pole o . See Fig. 4.

Arrange Z so that the top edge of R_1 is horizontal. Then Z' is Z rigidly rotated about o by α , because the zones are congruent and angle α is incident to the pole o . In this orientation all the n unit edges of Z are horizontal, all the unit edges of Z' at angle α .

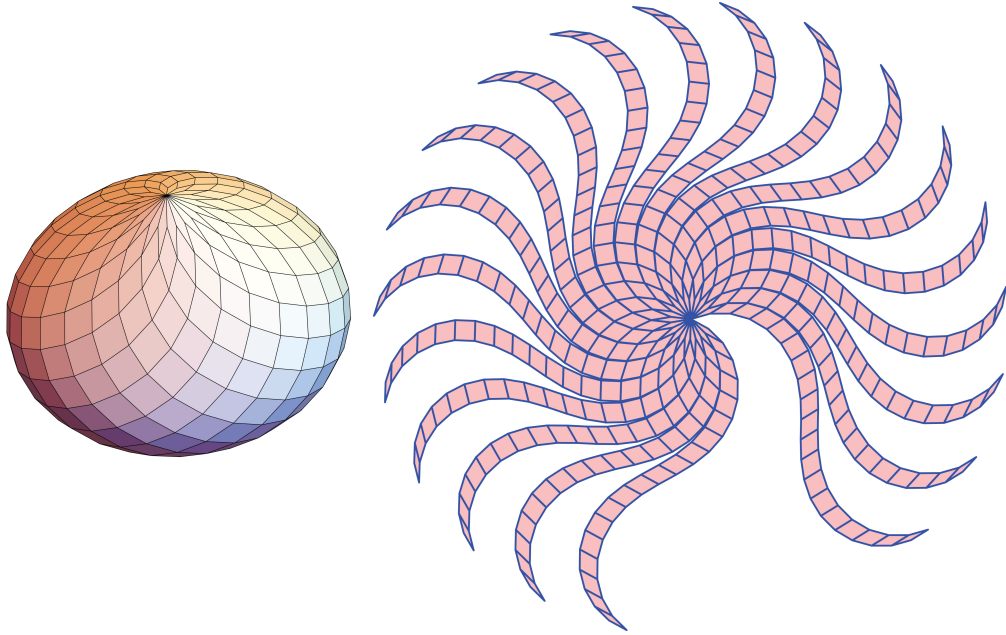


Figure 2: $n = 20$, $\theta = 0.5 \approx 28.6^\circ$, $\alpha \approx 15.8^\circ$.

3 Proof Plan

Because Z' is just a rigid rotation of Z about o , it seems almost obvious that they cannot overlap. But I have not found a simple proof.

However, the overall plan of the proof presented here is simple. First we establish a condition on the shape of Z that guarantees non-overlap. Let $|\mathcal{C}(r) \cap Z| = \beta(r)$ be the angular measure of the arc of the circle $\mathcal{C}(r)$ centered on o that intersects Z . (This definition is revisited and clarified in the next section.) Then the shape condition is that, if $\beta(r) \leq \alpha$ for all r , then Z and the rotated Z' do not overlap.

The remainder of the proof calculates $\beta(r)$ and verifies that it is $\leq \alpha$, for all n and all θ . It is these calculations that are not straightforward. The main open problem (Section 7) is to find a proof that can establish $\beta \leq \alpha$ without these calculations.

4 Overlap Condition

We say that two regions A and B in the plane *overlap* if there is a point p strictly interior to both A and B .

Let $\mathcal{C}(r)$ be a circle of radius r centered on o . Define $|\mathcal{C}(r) \cap Z| = \beta(r)$ as the angle subtended at o by the shortest arc of $\mathcal{C}(r)$ that covers $\mathcal{C}(r) \cap Z$. (We will drop the r in $\beta(r)$ when clear from the context.) Note here we are allowing

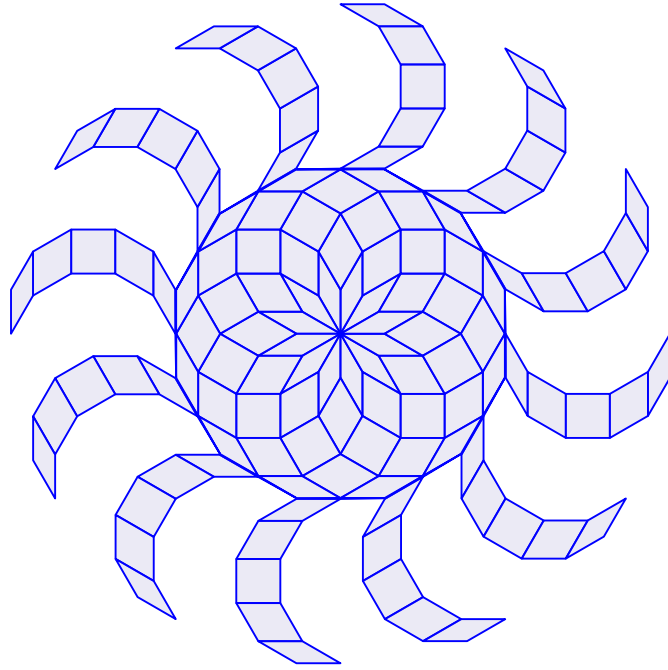


Figure 3: $n = 12, \theta = \frac{1}{2}^\circ$.

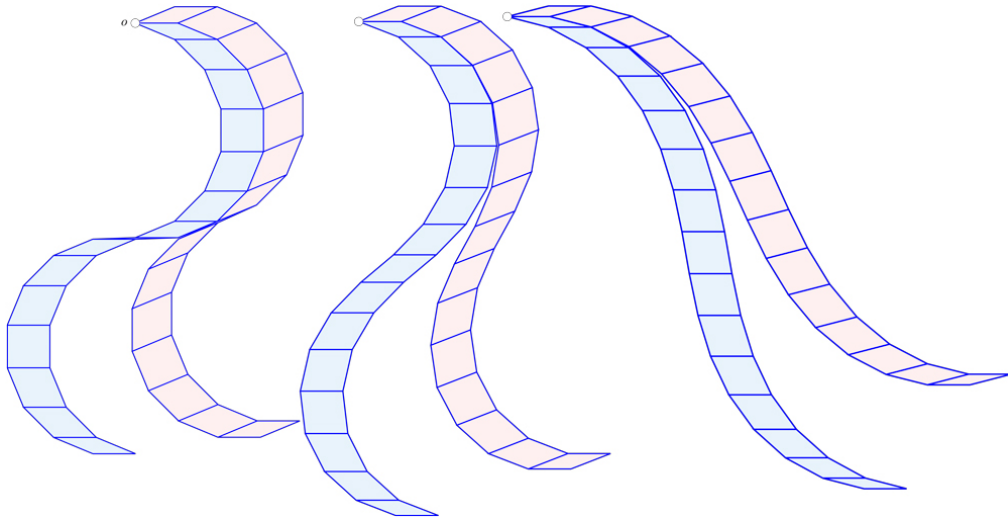


Figure 4: Z and Z' for $n = 16$. Left to right: $\theta = 1^\circ, 20^\circ, 50^\circ$.

for the possibility that $\mathcal{C}(r) \cap Z$ might be disconnected. And in fact, this is necessary, for in extreme situations ($\theta \rightarrow 0$), this can occur. See Fig. 5. We will revisit disconnected arcs in Section 6.1.

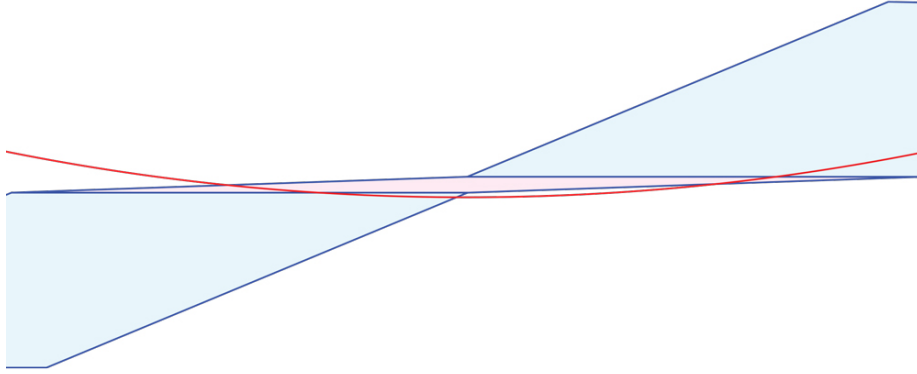


Figure 5: $|\mathcal{C}(r) \cap Z|$ is disconnected. $n = 16$, $\theta = 1^\circ$. $R_{n/2} = R_8$ is pink.

Lemma 1 *If Z and Z' overlap at point p on circle $\mathcal{C}(r)$, $r = |op|$, then $|\mathcal{C}(r) \cap Z| = \beta(r) > \alpha$.*

Proof: Suppose for contradiction that Z and Z' overlap at p but $|\mathcal{C}(r) \cap Z| = \beta \leq \alpha$. Because Z' is the rotation of Z about o by α , there is a gap of length $\alpha - \beta \geq 0$ along $\mathcal{C}(r)$, which separates $\mathcal{C}(r) \cap Z$ to the left (cw) and $\mathcal{C}(r) \cap Z'$ to the right (ccw). Therefore, Z and Z' are separated or just touch along $\mathcal{C}(r)$, and p cannot exist. \square

Note that, because $\mathcal{C}(r) \cap Z$ could be disconnected, it is possible that $\beta(r) > \alpha$ but there is no point p witnessing overlap. However, if there is a p , then it must be that $\beta(r) > \alpha$.

In Fig. 6, $\mathcal{C}(r) \cap Z$ is the red arc spanning $\beta(r) < \alpha$. Therefore when this arc is rotated by $\alpha > \beta(r)$ to the blue arc, the red and blue arcs cannot overlap.

Corollary 1 *If $|\mathcal{C}(r) \cap Z| = \beta(r) \leq \alpha$ for all r , then Z and Z' do not overlap.*

The remainder of the proof of Theorem 1 concentrates on proving $\beta \leq \alpha$.

5 Regular Polygon: $\theta = 0$

There is a sense in which the situation when $\theta \rightarrow 0$ is the most “dangerous,” for then there can be a flattened rhomb such as that illustrated in Fig. 5. When $\theta = 0$, the zonohedron degenerates to a doubly-covered regular n -gon, with the only curvature at the vertices on the rim. (See the earlier Fig. 3.) Then

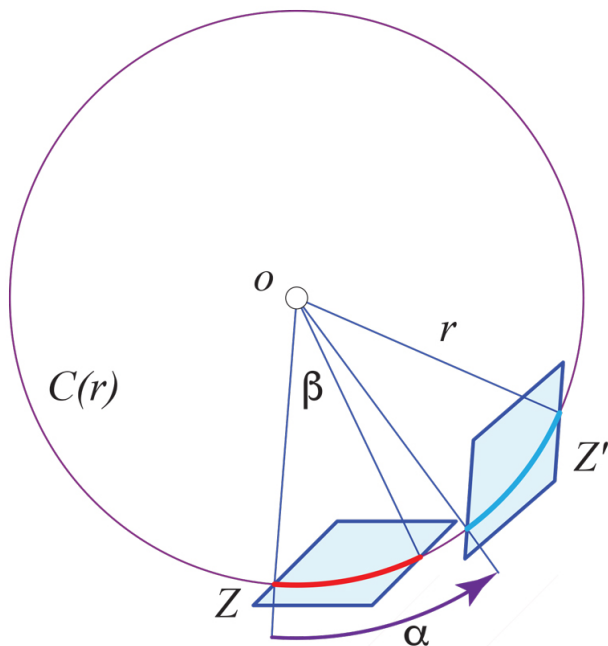


Figure 6: $\beta \leq \alpha$ implies no overlap.

the unfolding of a zone Z resembles mirrored S -shape composed to two half-regular polygons. Fig. 7(a) shows an example with $\theta = 1^\circ$, and (b) the $\theta = 0$ counterpart. The 1° example (a) shows that one rhomb R_8 is nearly flat; in (b) that rhomb collapses to a line segment.

Whether one counts the doubly-covered regular n -gon as a “polyhedron,” it is an interesting case, with regularities not present when $\theta > 0$.

There is a slight difference for n even or odd; compare Figs. 7 and Fig. 8. We will concentrate on n even, leaving n odd to remarks.

Let ∂Z_L and ∂Z_R be the right and left boundaries of Z , with Z in the previously described orientation. Let Z^+ and Z^- be the upper and lower halves of the S -shape. Let P_n be the regular polygon of n vertices that passes through the $n/2$ vertices of ∂Z_R^+ . Let C_R be the circle circumscribing P_n .² In Fig. 7(b), $n = 16$ and $\alpha = 2\pi/n = 22.5^\circ$.

We will prove that $|\mathcal{C}(r) \cap Z^+|$ is exactly α , and $|\mathcal{C}(r) \cap Z^-|$ is less than $\alpha/2$. Thus the rotation from Z to Z' leaves Z^+ and Z'^+ touching, with a large gap between Z^- and Z'^- . This is evident in Fig. 3 when $\theta = \frac{1}{2}^\circ$.

Lemma 2 $|\mathcal{C}(r) \cap Z^+| = \alpha$ for all r intersecting Z^+ .

Proof: We refer to Figs. 7(b) and 9 throughout this proof.

²With unit rhombs, the radius of C_R is $1/(2 \sin \alpha/2)$.

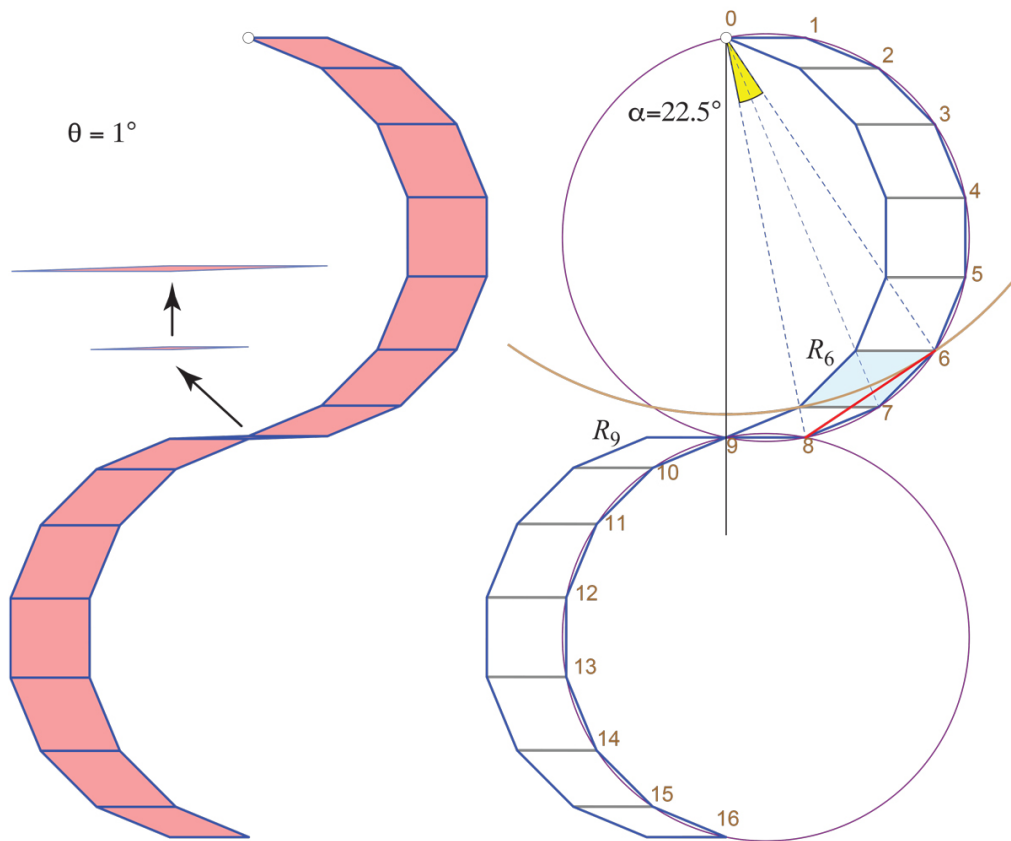


Figure 7: $n = 16$. (a) $\theta = 1^\circ$. Two enlargements of rhomb R_8 are shown. (b) $\theta = 0, \alpha = 22.5^\circ$.

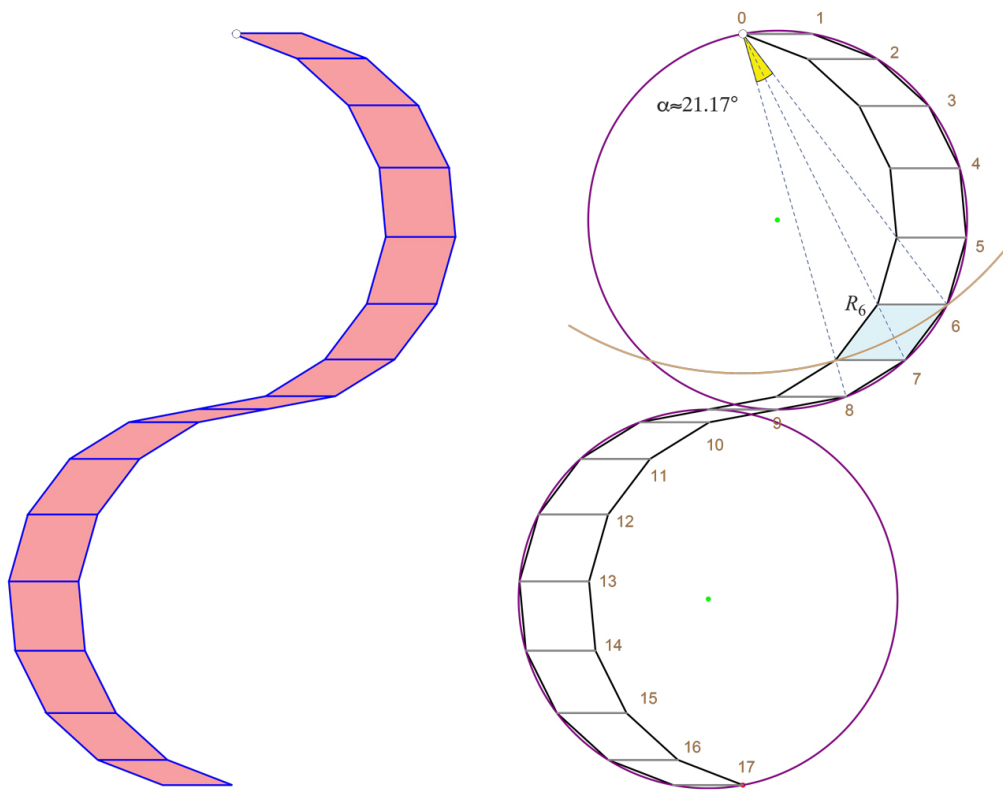


Figure 8: $n = 17$. (a) $\theta = 1^\circ$. (b) $\theta = 0, \alpha \approx 21.17^\circ$.

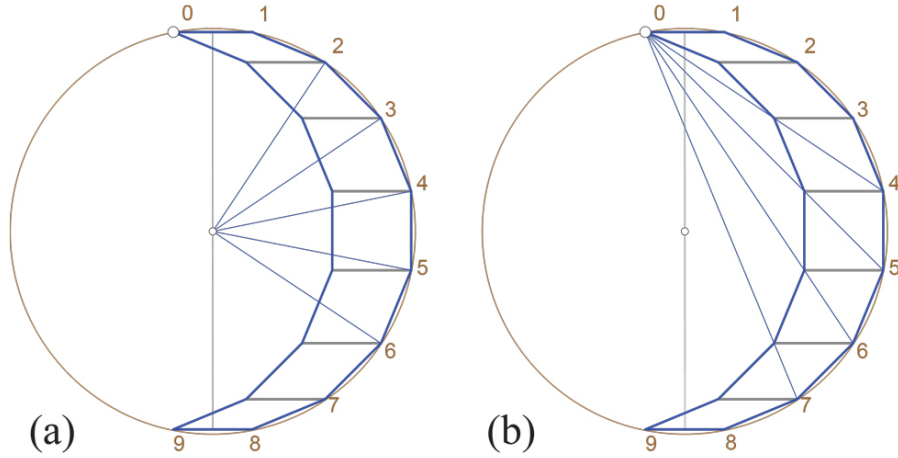


Figure 9: $n = 16$, $\theta = 0$, $\alpha = 22.5^\circ$. (a) Each unit segment inscribed in C_R spans $\alpha = 2\pi/n$ from the center of C_R . (b) Each segment spans $\alpha/2$ from a center on C_R .

Each side of a rhomb along ∂Z_R^+ is a unit-length chord of C_R , and so spans angle α from the center of C_R ; see Fig. 9(a). Therefore each edge spans $\alpha/2$ from $o = v_0$, which lies on C_R ; see Fig. 9(b). In Fig. 7(b), v_6v_7 is such an edge, of rhomb R_6 . A full rhomb of Z^+ spans a second edge, e.g., v_8v_9 . This determines a chord $c = v_6v_8$ (red in Fig. 7(b)), which therefore spans α from o . Thus $\mathcal{C}(r)$ with the appropriate r intersects a rhomb passing through diagonal endpoints, R_6 in our example.

Now we argue for the same conclusion when $\mathcal{C}(r)$ passes through Z^+ at an arbitrary location, rather than spanning a diagonal of some specific rhomb R_i . Let $\mathcal{C}(r)$ enter Z^+ at x and exit at y ; see Fig. 10. We now argue that the length of the arc $\mathcal{C}(r) \cap Z^+$ is exactly α , just as it is for the diagonal of each R_i . First note that the arc can cross at most two rhombi, i.e., it can cross at most one horizontal segment of Z^+ . Second, note that the arc can be partitioned into two parts, each part is symmetric with respect to a diagonal. In the figure, the diagonals are v_8o and v_7o . Then the left part of the arc (green) has length $2a$ and the right part (orange) has length $2b$. Now notice that $a + b$ is the length of the arc spanned by two adjacent diagonals. But we know that is $\alpha/2$. So we have established that $|\mathcal{C}(r) \cap Z^+| = \alpha$.

Thus we proved that $|\mathcal{C}(r) \cap Z^+| = \alpha$ for all r crossing Z^+ . \square

Now we turn to the claim for $|\mathcal{C}(r) \cap Z^-|$. Even though this arc is small, I have not found a simple proof that it is $\leq \alpha$. In fact, it is strictly less than half of α . Because my proof is technical, and only applies to the degenerate polar zonohedron when $\theta = 0$, it is relegated to the Appendix.

Lemma 3 $|\mathcal{C}(r) \cap Z^-| < \alpha/2$ for all r crossing Z^- .

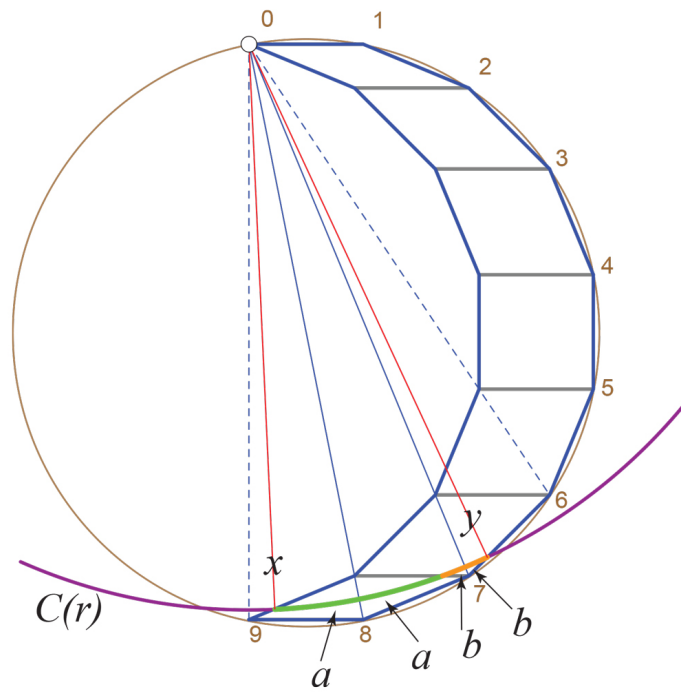


Figure 10: $|\mathcal{C}(r) \cap Z^+| = 2a + 2b$.

Proof: See the Appendix, Section 8. □ .

There remains the situation where $\mathcal{C}(r)$ intersects both Z^+ and Z^- . We analyze this case separately in Lemma 5 in Section 6.1, which establishes that arc $\mathcal{C}(r) \cap Z$ subtends exactly α from o .

6 Positive θ

In comparison to $\theta = 0$, Z for $\theta > 0$ is “stretched out” in that the turn angle of ∂Z_L between adjacent rhombs is less than α . (This turn angle is not constant rhomb-to-rhomb but it is strictly less than α when $\theta > 0$.) This means that $\mathcal{C}(r)$ crosses Z closer to the horizontal, intersecting rhombs nearer to unit length. Thus the intuition is that these arcs are short, and become shorter as r increases and pushes the chords further from o .

Lemma 4 $|\mathcal{C}(r) \cap Z| \leq \alpha$ for all r crossing Z .

Proof: The proof has four parts:

- (1) The chord c determined by $\mathcal{C}(r) \cap Z$ is more shallow (more horizontal) than rhomb diagonals.
- (2) If the chord c includes a corner of rhomb R_i , then it remains in R_i : $c \subset R_i$.
- (3) If c does not include a corner of a rhomb, then it fits inside the rhomb immediately above or below.
- (4) The most broad presentation of a rhomb to o is the nearly flat rhomb, with diagonal near 2, which subtends strictly less than $2 \cdot \alpha/2 = \alpha$ from o .

(1). Let $c = xy = \mathcal{C}(r) \cap Z$ be the chord of \mathcal{C} . It must be that the perpendicular bisector of xy passes through o , the center of $\mathcal{C}(r)$. Recall that the diagonals in the regular-polygon case— $\theta = 0$, Fig. 9—extend directly through o . The two diagonals of a rhomb meet orthogonally at their midpoints, so if xy is one diagonal, the other aims toward o .

Fig. 11(a) contrasts the $\theta > 0$ situation with $\theta = 0$. There, for example, the diagonal of R_5 , because of the turn-angle reduction/straightening, cannot any longer aim toward o (red), as it did when $\theta = 0$ (dashed). Extending this to all rhomb diagonals leads to Fig. 11(b), which displays all these potential diagonal chords, and shows that c cannot be a diagonal of R_i for $i \geq 2$: for each possible rhomb diagonal, the chord perpendicular falls below o .³

(2). This shows that the diagonals are too vertically steep (in our orientation of Z) to serve as the chord c : c must be more nearly horizontal. This implies that c would stay inside R_i were it to pass through a corner of R_i : $c \subset R_i$.

³Just barely below for R_2 , by 10^{-6} .

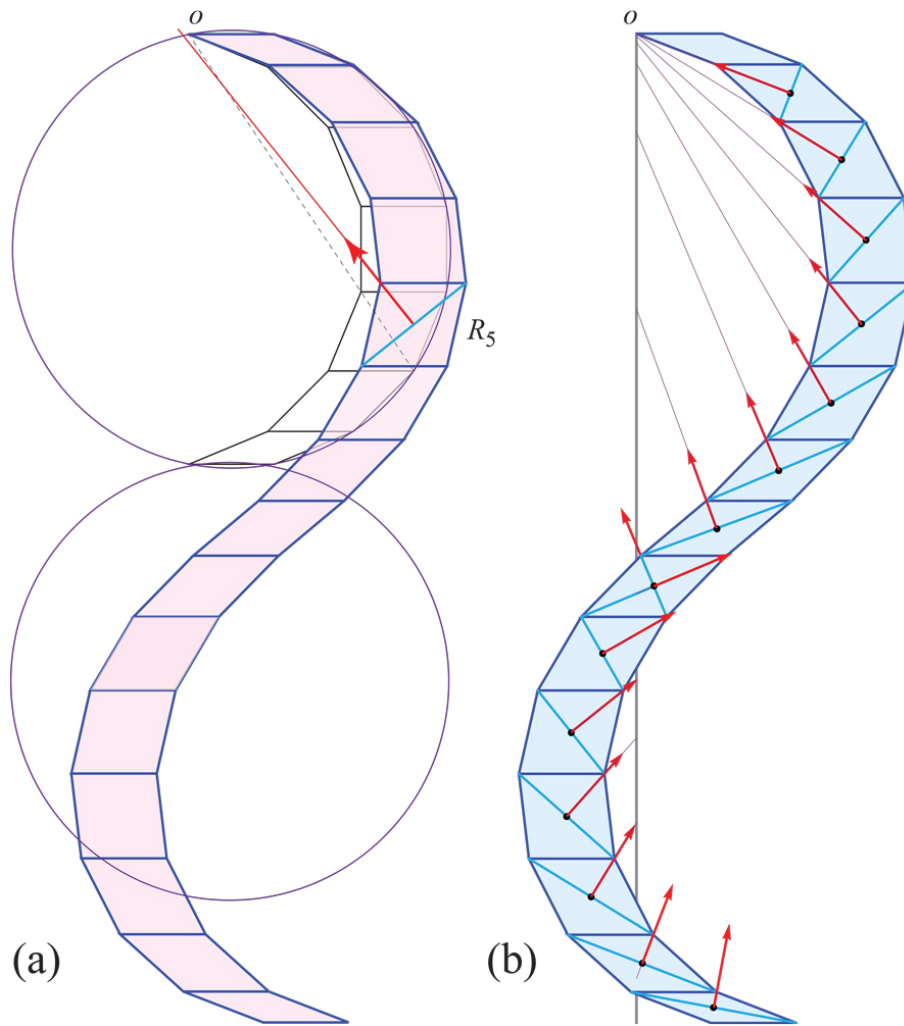


Figure 11: $n = 16$, $\theta = 20^\circ$. (a) Contrast with $\theta = 0$. Diagonal midpoint perpendicular of R_5 falls below o . (b) All diagonal perpendiculars fall below o .

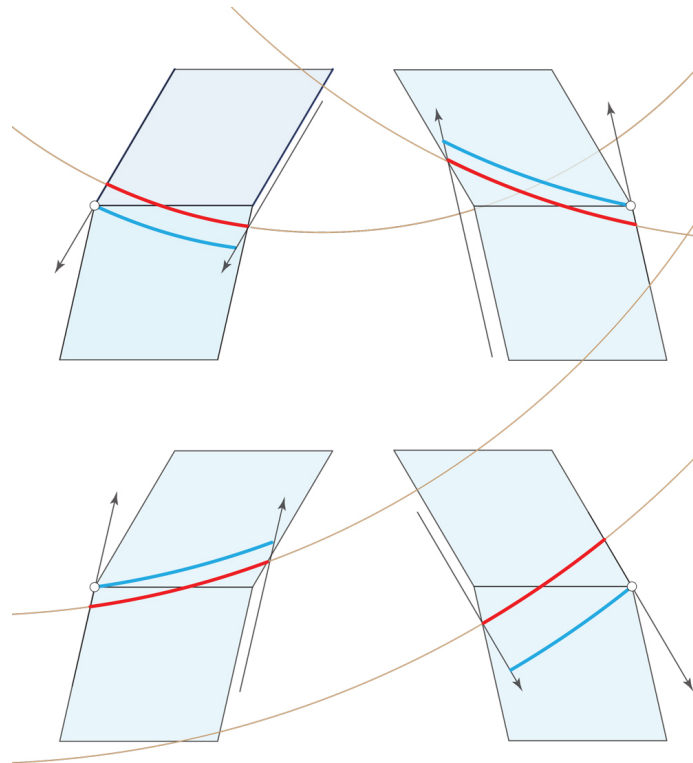


Figure 12: The red arc $\mathcal{C}(r) \cap Z$ can be translated up or down to fit into an adjacent rhomb. The convex corner at an endpoint of the blue translated arc is marked in each case.

(3). First we note that if an arc of $\mathcal{C}(r)$ intersects three or more rhombs, then with one exception, its chord c is steeper than the diagonal of a middle rhomb. The exception concerns the nearly flat rhomb $R_{n/2}$ illustrated earlier in Fig. 5. Because the argument for this exception is not straightforward, we address that in a separate lemma, Lemma 5 in Section 6.1 below. So henceforth assume $c = xy$ crosses a horizontal and intersects two rhombs, R_i and R_{i+1} .

Fig. 12 shows that the arc fits in either the adjacent upper or lower rhomb, by sliding an arc endpoint toward the convex vertex of ∂Z . One endpoint of the horizontal $R_i \cap R_{i+1}$ is a convex vertex and the other endpoint a reflex vertex. Sliding/translating the arc endpoint x along the side of the rhomb toward the convex vertex results in the other end of the arc y to lie strictly internal to either R_i or R_{i+1} . This follows because the reflex vertex implies that the extension of the incident R_i rhomb side enters R_{i+1} , and the extension of the incident R_{i+1} rhomb side enters R_i . The only exception is when there is zero turn angle between the rhombs (which occurs for example with R_8 and R_9 in Fig. 8), when the translated arc has both endpoints on rhomb sides. So in all cases, the arc fits inside a rhomb. In the next step it does not matter in which rhomb it fits, for we use an upperbound over all rhombs.

(4). Now that we know $\mathcal{C}(r) \cap Z$ fits inside some rhomb R_i of Z , we look at the angle subtended at o by the full rhomb R_i . This is an upperbound on the measure of the arc inside (often a considerably generous upper bound).

Now, the broadest extent of a rhomb from the point of view of o is the nearly flat rhomb whose long diagonal is nearly 2 units. For example, this is the middle rhomb R_8 illustrated previously in Fig. 7(a). As we know from Fig. 9, each unit side of a rhomb subtends $\alpha/2$ in Z^+ when $\theta = 0$. For $\theta > 0$, each unit side subtends $< \alpha/2$, not only in Z^+ but for all unit sides in a rhomb of Z . Therefore a whole rhomb subtends $< \alpha$.

Fig. 13 illustrates the actual β_i subtended angles for R_i , $i = 1, \dots, n-1$, in two examples. As claimed, $\beta < \alpha$, with equality only for $i = 1$. (The small upticks visible at R_{12} when $n = 16$, and at R_{18} when $n = 24$, reflect the lower tail of the S -shape, where the rhombs become more flattened.)

Equality to α only occurs when $\mathcal{C}(r)$ crosses the first rhomb R_1 . For all larger r , the inequality is strict. \square

6.1 Nearly Flat Rhomb $R_{n/2}$

We encountered a disconnected arc $\mathcal{C}(r) \cap Z$ earlier in Fig. 5. This is also an example where the arc crosses three rhombs. This nearly flat transitional rhomb only occurs when n is even. Even as $\theta \rightarrow 0$, no rhomb for n odd becomes arbitrarily close to flat; see Fig. 8.

In order to complete step (4) of Lemma 4—to show the angle subtended at o by the full rhomb R_i is < 2 —we analyze this exceptional case in the following lemma.

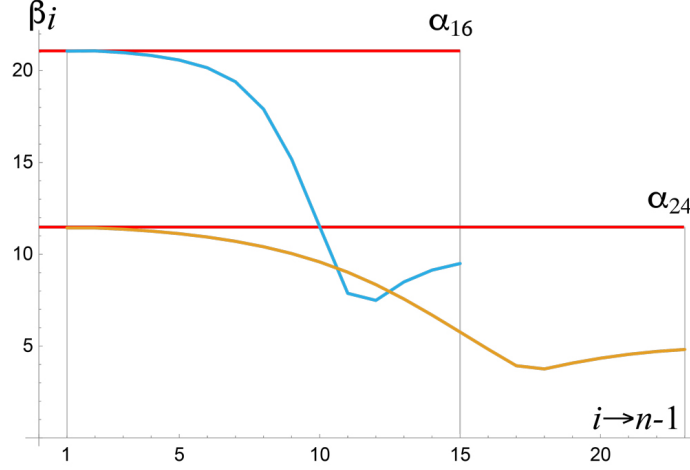


Figure 13: β_i is the angle (in degrees) subtended from o by rhomb R_i : for $n = 16$, $\theta = 20^\circ$ when $\alpha = 22.5^\circ$; and for $n = 24$, $\theta = 40^\circ$, when $\alpha \approx 11.48^\circ$.

Lemma 5 *If $\mathcal{C}(r)$ intersects $R_{n/2}$, n even, then the chord c of arc $\mathcal{C}(r) \cap Z$ has length < 2 .*

Proof: To simplify notation, let $R_0 = R_{n/2}$, and let R_- and R_+ be the congruent rhombs above and below R_0 . Refer to Fig. 14 throughout.

We first analyze the situation when $\theta = 0$ when R_0 reduces to a segment. If $\mathcal{C}(r)$ passes through the upper corner a of R_+ , then it also passes through the lower corner b of R_- . See the blue arc in (a) of the figure. If $r' < r$ is a bit smaller, then still the span of $\mathcal{C}(r') \cap Z = |xy|$ is exactly 2. This follows because the portion of the arc in R_- is symmetric about the diagonal line bo , so $|ax| = |by|$. Note that $\mathcal{C}(r') \cap Z$ (red) is disconnected, and intersects all three rhombs.

Now consider the situation when θ is small, (b) of the figure. (This is an annotated version of the earlier Fig. 5.) R_0 is a nearly flat rhomb between R_- and R_+ . If $\mathcal{C}(r)$ passes through the upper corner a of R_+ , it falls below the lower corner b of R_- , because the small intervening height of R_0 lifts up b . See the blue arc in (b) of the figure. If $r' < r$ is a bit smaller, then the right end of the $\mathcal{C}(r')$ arc (red) crosses R_- , but because b is lifted, the span $\mathcal{C}(r') \cap R_-$ is smaller than in the $\theta = 0$ case. The result is that the span $|xy|$ is strictly less than 2.

We can quantify the lifting as follows. Symbolic calculation show that the angle of the central rhomb R_0 is exactly 2θ ; so 2° in Fig. 5(b). Let $d = |ax| \leq 1$ be the horizontal distance from a to x . Then the entry of $\mathcal{C}(r')$ at x into R_0 is lifted by $d \sin \theta$, whereas the lifting of b is at least twice that: $2 \sin \theta$.

Although we have ignored the slight deviation from the horizontal of the bottom and top edges of R_- and R_+ when θ is positive, that deviation can be

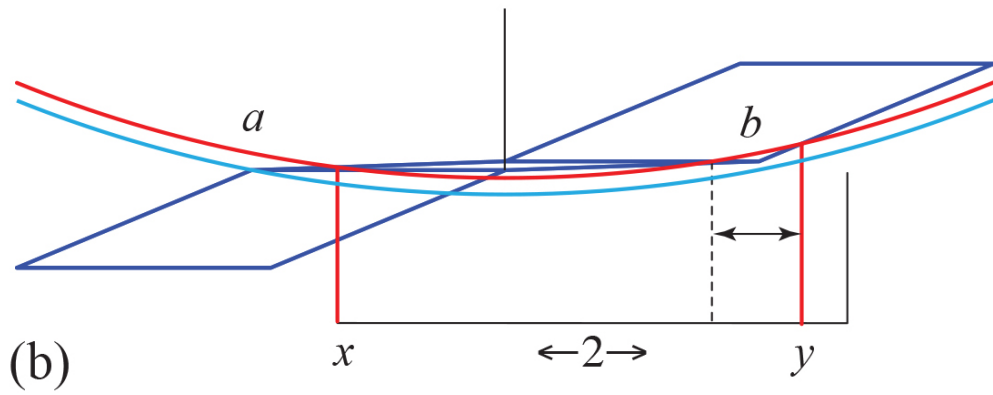
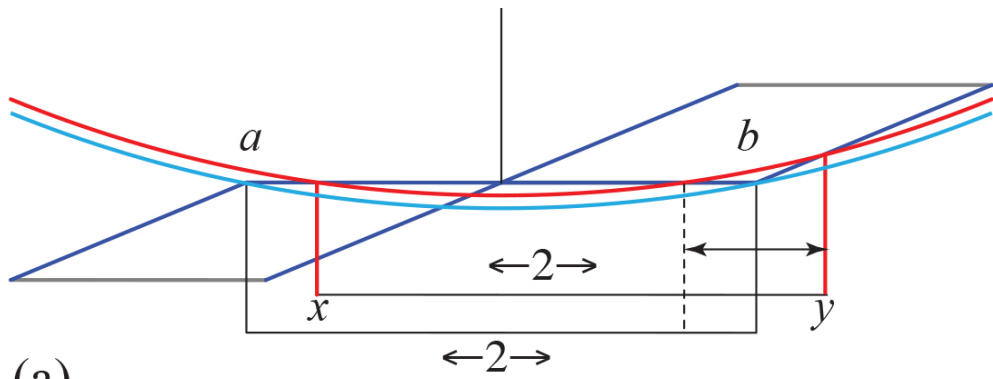


Figure 14: $n = 16$. (a) $\theta = 0$: $|xy| = |ab|$. (b) $\theta = 1^\circ$: $|xy| < 2$.

removed by a slight rotation, leaving the key inequality $|xy| < 2$ intact. \square

The slight deviation from the horizontal noted above implies that the nearly vertical diagonal of R_0 does not aim through o , and so the diagonal argument used in Lemma 4 still holds for $R_{n/2}$. This is discernible in the enlargement of $R_{n/2}$ shown in Fig. 7(a).

With Lemma 5 completing Lemma 4, we have now proved Theorem 1 via Corollary 1 for all polar zonohedra for $\theta > 0$. And Lemmas 2 and 3 settle it for the degenerate polyhedron when $\theta = 0$.

7 Open Problem

That the zone-by-zone unfolding avoids overlap seems almost obvious, yet the proof presented of Theorem 1 feels labored. Surely there is a simpler proof.

Acknowledgements. My unfolding software employs code from Hart's supplement to [Har21]. I benefitted from discussions with Boris Aronov, Richard Mabry, and Joseph Malkevitch.

8 Appendix: Lower Regular n -gon

In order to prove Lemma 3, we first abstract the S -shaped regular polygon to circles, surrounding Z^+ and Z^- , passing through ∂Z_L and ∂Z_R . We call these circles C_L^\pm and C_R^\pm . We compute arc lengths through these circles. These arc lengths are clearly an upperbound on the arcs intersecting Z sandwiched between the circles.

Secondly, for computational convenience, we reflect Z^- across the vertical so that all arcs are to the right of the vertical. The key result is a ‘‘crescent lemma’’ that is perhaps known under another name, as it is pure elementary geometry.

8.1 The Crescent Lemma

Refer to Fig. 15 throughout the proof below.

Lemma 6 *Let $\mathcal{C}(r)$ centered on o intersect C_L^- and C_R^- , the two circles circumscribed and inscribed about Z^- . Let S be the crescent shape between C_L^- and C_R^- (shaded blue in the figure). Then $|\mathcal{C}(r) \cap S|$, the angle subtended from o across S , is a constant independent of r .*

Proof: Incident to o we label four rays A, B, C, D . The arc $\mathcal{C}(r) \cap S$ subtends an angle β at o , between B and D . To simplify notation, we will use $\angle BD$ to indicate that angle, and similarly for the other labeled rays.

We first define three of the four rays.

- A is the vertical ray through o and $C_L^- \cap C_R^-$.
- B is the ray through the point where $\mathcal{C}(r)$ crosses through C_L^- .
- D is the ray through the point where $\mathcal{C}(r)$ exits through C_R^- .

Let $\beta = \angle BD$ and $\gamma = \angle AB$. Define the fourth ray C so that $\angle CD = \gamma$.

Rotate BD rigidly clockwise about o by γ . By definition, this maps B to A , and maps D to C . So now we see that $\beta = \angle AC$.

Now consider any other r' with $\mathcal{C}(r')$ intersecting A and C . Then the arc between A and C for this r' is exactly β , for this arc is just an arc of the circle $\mathcal{C}(r')$, concentric with $\mathcal{C}(r)$, delimited by $\angle AC$. Therefore, $|\mathcal{C}(r) \cap S| = \beta$ for all r crossing the crescent. \square

We label the next result as a Proposition rather than a Lemma, because we rely on a bound calculated from an explicit equation.

Proposition 1 *The angle $\beta = \angle BD$ defined in Lemma 6 is strictly less than $\alpha/2$.*

Proof: Because all the arc $|\mathcal{C}(r) \cap S|$ are the same length β , it suffice to measure the length of one, say the vertically lowest arc shown in Fig. 15. We would like to compare this β to α , which is the counterpart in Z^+ . These angles depend on n , which determines the length of each rhomb side. (Here we use unit radius

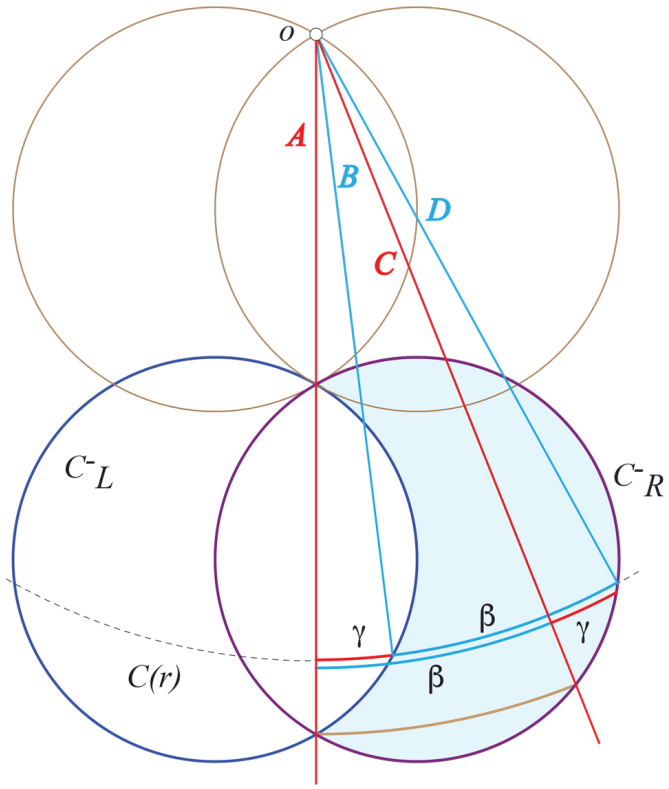


Figure 15: Z^- lies in the crescent between C_L^- and C_R^- . $C(r)$ intersects the crescent in an arc of angle β independent of r .

circles C_L^- and C_R^- , so the rhomb sides have length L as a function of n .) Even though n is a natural number, in the context of circles replacing the discrete rhombs, we can calculate that

$$\begin{aligned}\alpha &= 2\pi/n \\ L &= 2 \sin(\alpha/2) \\ n &= \pi / \arcsin(L/2)\end{aligned}$$

The last equation turns n into a continuous variable.

Using this, I calculated the ratio β/α as a function of this continuous n . The result is shown in Fig. 16. For all $n \geq 3$, $\beta/\alpha < \frac{1}{2}$. It is evident that as $n \rightarrow \infty$,

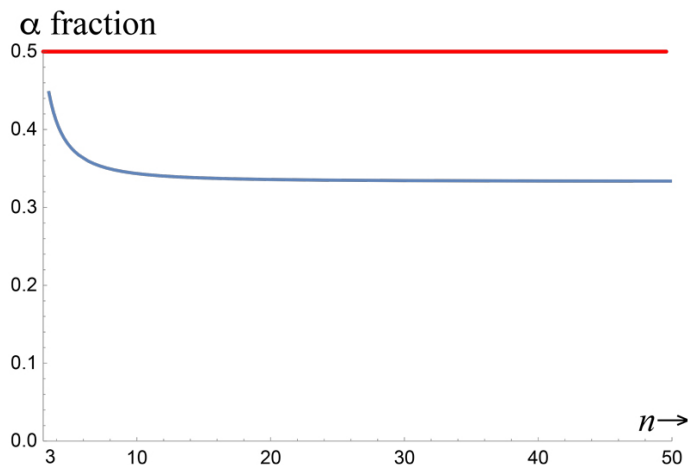


Figure 16: The ratio β/α for different values of n .

the fraction diminishes to $\frac{1}{3}$, and as n gets small, the fraction increases but does not reach $\frac{1}{2}$ by $n = 3$, the smallest n .⁴

A formal proof that $\beta/\alpha < \frac{1}{2}$ is left for future work, but in light of this plot and the equations below, there can be little doubt it holds. \square

We have established Lemma 3: $|\mathcal{C}(r) \cap Z^-| = \beta < \alpha/2$.

8.2 Equations

Using L to represent the length of a rhomb side when the radii of C_L^- and C_R^- are both 1, the equations that lead to the plot in Fig. 16 are explicitly:

$$\tan \alpha = \frac{L\sqrt{4-L^2}}{2-L^2}. \quad (1)$$

⁴For $n = 3$, the polar zonohedron is a combinatorial cube.

$$\tan \beta = \frac{3 \left(L^4 - 4L^2 - \sqrt{4 - L^2} \sqrt{L^4 (4 - L^2)} \right)}{L \left(9\sqrt{4 - L^2} L^2 - 36\sqrt{4 - L^2} + \sqrt{L^4 (4 - L^2)} \right)}. \quad (2)$$

$$\beta/\alpha = \frac{\arctan(\tan \beta)}{\arctan(\tan \alpha)}. \quad (3)$$

Calculations with these equations verify that the graph shown in Fig. 16 is accurate. In particular, a Taylor-series expansion of the ratio $\tan \beta / \tan \alpha$ results in an expression that verifies that, as $n \rightarrow \infty$ (and so $L \rightarrow 0$), the ratio approaches β/α and its limit is indeed $1/3$:

$$\lim_{L \rightarrow 0} \frac{\sqrt{L^4} + L^2}{6L^2} = \frac{1}{3}. \quad (4)$$

References

- [DO07] Erik D. Demaine and Joseph O’Rourke. *Geometric Folding Algorithms: Linkages, Origami, Polyhedra*. Cambridge University Press, 2007. <http://www.gfalop.org>.
- [Har21] George Hart. The joy of polar zonohedra. In *Bridges 2021 Conf. Proc.*, pages 7–14, August 2021.
- [O’R01] Joseph O’Rourke. Unfolding prismoids without overlap. Unpublished manuscript, 2001.
- [O’R13] Joseph O’Rourke. Dürer’s problem. In Marjorie Senechal, editor, *Shaping Space: Exploring Polyhedra in Nature, Art, and the Geometrical Imagination*, pages 77–86. Springer, 2013.
- [Rad21] Manuel Radons. Edge-unfolding nested prismatoids. *arXiv:2105.00555*, 2021.
- [She75] Geoffrey C. Shephard. Convex polytopes with convex nets. *Math. Proc. Camb. Phil. Soc.*, 78:389–403, 1975.
- [Tow96] Russell Towle. Graphics gallery: Polar zonohedra. *The Mathematica Journal*, 6:8–12, 1996.